



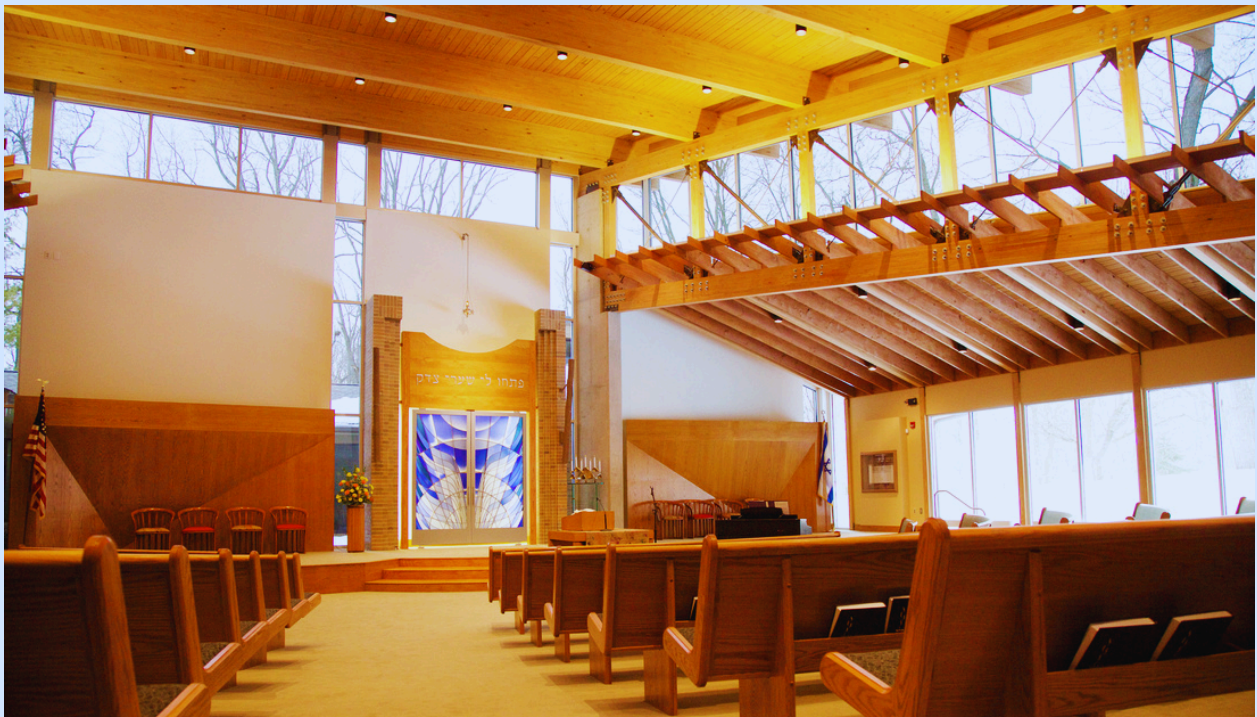
Congregation Beth Tikvah

WELCOME TO BETH TIKVAH!

**OUR MISSION AT CONGREGATION BETH TIKVAH
IS TO EMPOWER INDIVIDUALS TO LIVE AND LEARN
JEWISHLY, STRIVING TO MAKE THE WORLD A
BETTER PLACE.**

**AS A WELCOMING AND INCLUSIVE SYNAGOGUE, WE
ARE DEDICATED TO FOSTERING COMMUNITY
THROUGH EDUCATIONAL, RELIGIOUS, AND SOCIAL
ACTIVITIES.**

**WE WORK TO PROMOTE THE ENDURING PRINCIPLES
OF REFORM JUDAISM AND SUPPORT THEIR GROWTH
THROUGH WORSHIP, STUDY, ASSEMBLY, AND
COMMUNITY EVENTS.**



Congregation Beth Tikvah • 6121 Olentangy River Road • Worthington, OH 43085
(614) 885-6286 • Fax: (614) 885-4052 • www.bethtikvahcolumbus.org



MEET RABBI RICK KELLNER



RABBI KELLNER'S JOURNEY TO CBT

Rabbi Rick Kellner has been the senior rabbi and spiritual leader of Congregation Beth Tikvah since July 2011. He was ordained in May 2007 at the Hebrew Union College-Jewish Institute of Religion in Los Angeles, where he also earned his Master's in Hebrew Letters and Jewish Education. Rabbi Kellner is an active member of the Columbus Board of Rabbis and the BREAD Social Justice organization in Columbus. He also serves as VP of Program and Member Support on the board of the Central Conference of American Rabbis, the largest Rabbinic organization in the world.



RABBI KELLNER'S VISION

Rabbi Kellner's approach to Judaism is rooted in the values of Joy, Community, Meaning, and Impact. He believes in fostering a community built on strong, meaningful relationships. Through these connections, we create a vibrant and supportive congregation. Rabbi Kellner has introduced a variety of prayer experiences to our community and offers classes on various topics such as Israel, Torah study, the environment, and Shabbat.

BACKGROUND & FAMILY

Originally from New York, Rabbi Kellner graduated Summa Cum Laude from the University at Albany. Before joining Congregation Beth Tikvah, he served as the Associate Rabbi of Temple Isaiah in Los Angeles, where he developed the Shabbat B'yachad family education program, coordinated adult learning, and established a healing center. Rabbi Kellner and his wife Debra reside in the Worthington area with their two daughters, Zoe and Shira.

OFFICE & MUSIC STAFF

DEBBIE VINOCUR
EXECUTIVE DIRECTOR

MORISSA R. FREIBERG
DIRECTOR OF EDUCATION &
LIFELONG LEARNING

EVERETT SMITH
FINANCE MANAGER

HANNAH KARR
MARKETING & COMMUNICATIONS
SPECIALIST

RHONDA SMITH
ADMINISTRATIVE ASSISTANT

JULIE SAPPER
DIRECTOR OF MUSICAL
PROGRAMMING

JOHN STEFANO
CANTORIAL SOLOIST

DEBBIE COSTA
CANTORIAL SOLOIST

BOARD OF TRUSTEES

TED FONS
PRESIDENT

TARA ROZEN
1ST VICE PRESIDENT

SHERI SCAGLIONE
2ND VICE PRESIDENT

JOSH REINICKE
SECRETARY

JONATHAN BECK
TREASURER

LEWIS SANDEROW
PAST PRESIDENT



Congregations Beth Tikvah

Life Cycle Events

BABY NAMINGS...

Brit Milah: Covenant of Circumcision for boys | *Simchat Bat*:
Welcoming ceremony for girls

B'NAI MITZVAHS...

Becoming a Bar/Bat Mitzvah is a serious but wonderful experience that should inspire and excite students about their heritage and their future. It is an affirmation of one's Jewish knowledge and maturity with a great sense of being part of something much bigger than themselves.

CONFIRMATION...

Confirmation is a beautiful and inspiring ceremony. It is a rite in which our young adult students confirm the concepts and principles of the Jewish way of life and their acceptance of Torah. During the 10th grade year, our students spend time learning with our rabbi and Confirmation teacher. Students discuss and debate sophisticated matters including: social justice, ethics, relationships and God/Theology.

CONVERSION...

Conversion to Judaism is a challenging and powerful process. The decision to convert is important and can only be made by that individual. We welcome all who seek spiritual meaning and connection in their lives to explore the gifts that a Jewish life has to offer.

WEDDINGS...

Beth Tikvah is your spiritual home when the time comes to celebrate your family's *simchas* or when you need to reach out for guidance and support during times of need. Our Rabbi and staff are honored to be of service to you.

PASTORAL CARE FOR THE ILL & END OF LIFE CARE...

When a loved one is ill, terminally or temporarily, it's a difficult time for all family members involved. Our rabbi can serve as a source of comfort and support.

BETH TIKVAH MEMBERSHIP

JOINING OUR FAMILY...

Membership at Congregation Beth Tikvah is open to all individuals of Jewish faith, eighteen years and older, and extends to the entire family, including non-Jewish spouses and partners. We take pride in welcoming a diverse population, embracing families and individuals from various Jewish backgrounds and lifestyles. As a member of our "House of Hope," you join a vibrant community of over 460 families, fulfilling spiritual, educational, and social needs, while fostering a sense of belonging in a shared Jewish home.

Congregation Beth Tikvah adheres to the "Fair Share" policy of the Union for Reform Judaism, ensuring no one is denied membership due to financial hardship. Prospective and current members can choose an Annual Membership Commitment Level that best suits their financial situation. We are eager to welcome you, answer any questions, provide tours of our temple, and help you become a cherished part of the Beth Tikvah family. Join us and experience the richness of a connected, compassionate, and vibrant Jewish community. Benefits of joining include:

- Shabbat services
- High Holiday services
- Professional & engaged rabbi and staff
- Vibrant youth & family groups
- Opportunities to lead services
- Religious School programming
- Hebrew School programming
- Bar/Bat Mitzvah training
- Adult education programs & classes
- Family activities and gatherings
- Social Action opportunities
- Activities for young singles
- Active Sisterhood & Brotherhood
- Opportunities to travel to Israel
- Judaica Shop
- Kitchen & Banquet facilities
- Library
- Volunteer opportunities
- Abundance of learning opportunities

RELIGIOUS SCHOOL

CONGREGATION BETH TIKVAH

Our Mission:

To instill within our children a love of Judaism through the study of history, liturgy, ethics, Torah, holidays, customs, and values, and to inspire them to embrace their heritage and lead Jewish lives both inside and outside of our community.

Goals:

- Knowledge about Jewish history and texts
- Celebrate rituals & traditions
- Explore personal relationship with God
- Recognize Hebrew as our sacred language
- Appreciate Israel's historical relevance
- Act with justice, kindness, and compassion
- Value individual choice in Jewish practice
- Identify with the practice of Reform Judaism
- Recognize the family's role in Jewish life



HEBREW SCHOOL

CONGREGATION BETH TIKVAH

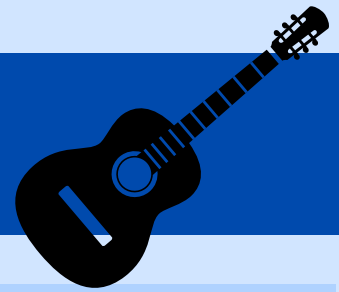
Our Mission:

Our Hebrew School Program is designed to develop students' ability to read, write, and speak the Hebrew language. In preparation for B'nai Mitzvah, all students are required to complete four years of Hebrew School.

Goals:

- Participate meaningfully in synagogue**
- Learn basic Hebrew vocab and grammar**
- Understand Hebrew roots and prefixes**
- Achieve competence for Bar/Bat Mitzvah**
- Recognize values & holiday observance**
- Love and appreciate the Hebrew language**

SHIRONIM



Beth Tikvah's adult (18 and older) volunteer member choir, the Shironim, enriches worship with their beautiful and inspiring songs. This dedicated group of singers not only enhances the spiritual experience during High Holy Days services, but also provides musical leadership at Shabbat services throughout the year, creating a warm and inviting atmosphere for all who attend.

If you have a passion for singing and would like to share your talent with the Beth Tikvah community, consider joining the Shironim. For more information about how you can get involved, please contact Julie Sapper. The choir welcomes new members who are eager to contribute to the rich musical tradition of Beth Tikvah.



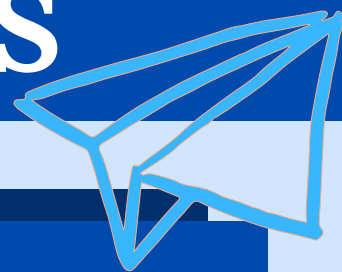
SHIR CHADASH & SHABBAT INSTRUMENTALISTS

Our teen ensemble choir, Shir Chadash, includes 7th-12th graders who perform at special Shabbat services and holiday celebrations several times per year. These students practice after Religious School and select weekday evenings to receive guidance from Julie Sapper, Director of Musical Programming.

Our Shabbat Instrumentalists are Beth Tikvah's members or magicians who perform regularly at Shabbat services.

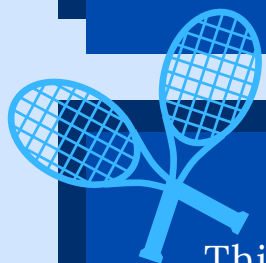
If you're a musician and would like to join a group that enjoys making music together, contact Julie Sapper at juliesapper@gmail.com for more info about either of these groups.

YOUTH GROUPS



BETHTY: GRADES 9-12

The ultimate experience for teens who enjoy planning and implementing their own events. BethTY elects a teen leadership board each year that helps design and plan the calendar of events each year. Events include Lock-Ins, Dinners out on the town, Movie Nights, and more!



JUNIOR BETHTY: GRADES 6-8

This group allows students to form bonds with their peers throughout their religious school experience. They learn independence skills and engage in activities which are planned and organized through their own efforts and ideas.



CHALUTZIM: GRADES 3-5

This group represents the 'next step' in a child's involvement in Jewish social activities. Programs generally take place every other month from Sept-May, and occur on Sundays. Participants enjoy tikkun olam as well as religious and social programs.



KESHET: GRADES K-2

One of the first social steps in a child's life, enables them to gather with children of similar ages. This group fosters friendships among children *and* parents. They take part in many activities including arts & crafts, cooking, sports, and much more. Keshet is a great way to begin your child's Jewish life in a positive environment.



ADULT LEARNING

Lectures:

Lectures are on a variety of topics for personal growth & enrichment. Topics may be political, philosophical, focus on specific issues, or explore modern Judaism. The lectures are stimulating, interactive, and designed to inform & contribute to your love of learning.



Adult Hebrew:

Beth Tikvah offers Hebrew to our Adult members. We typically offer two sessions: one for adults who do not know Hebrew letters and one for adults who know their letters and want to work on proficiency. We also offer Adult B'nai Mitzvah instruction.



Women's Torah Study

This group is led by Morissa Freiberg and focuses on the role of women in the Torah



Torah Study & Minyan:

Rabbi Kellner leads Torah study and Library Minyan. Join us for thought provoking discussion on the weekly Torah Portion.

BROTHERHOOD



The Beth Tikvah Brotherhood is a vibrant social and service organization for men in our congregation. We host three major annual events: the Columbus "Souper Bowl" Cook-Off, the Hanukkah Latkefest, and the Meals on Wheels delivery. The "Souper Bowl" supports our Jewish Camp Scholarship fund, while the Latkefest sees Brotherhood members making latkes for the entire congregation on Shabbat during Hanukkah. Additionally, members deliver Meals on Wheels in December. Beyond these events, we also organize monthly dinners, cook-outs, trips, and other gatherings. New adult male members receive a free Brotherhood membership in their first year, offering a fantastic opportunity to make new friends at Beth Tikvah.



SISTERHOOD

The Sisterhood of Congregation Beth Tikvah connects women of all ages through education, religious connection, philanthropy, and support of the congregation, fostering lifelong relationships and strengthening our impact over generations. Affiliated with and supported by the Women of Reform Judaism, our members benefit from leadership training, workshops, and community engagement opportunities. We offer women of Beth Tikvah social and spiritual connection while supporting the congregation. We fund education, building needs, and community activities; host an annual Honey Sale for charity; organize Mahjong games, monthly dinners, an annual Sisterhood dinner, Book Club, Bagels & Boutique, and special events; participate in Beth Tikvah Mitzvah Day; and provide access to WRJ programming.

Join us as we evolve and welcome new ideas!

SHISHIM

CONGREGATION BETH TIKVAH

This group is for senior members and offers opportunities to build relationships and engage in a variety of social and education experiences. Members include congregants ages 60 and older as well as their guests. Topics range from wrongful incarceration to Jews on Broadway. There is a program to pique anyone's interest. This is NOT your grandma's social club.



NEW MEMBER CONNECTIONS

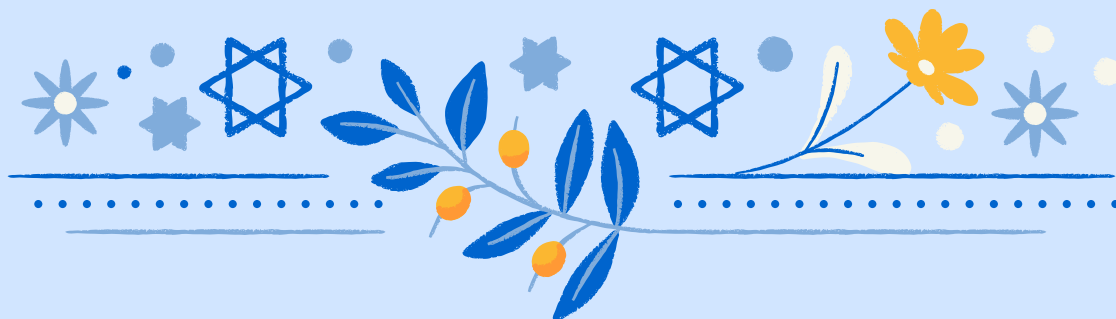


This group is responsible for welcoming all of our new member families to the congregation by sending out welcome gifts, organizing events, and reaching out to build a relationship. This group also provides peer families to help new families get integrated into Beth Tikvah.



B.R.E.A.D.

Beth Tikvah actively participates in the community-wide B.R.E.A.D. Organization (Building Responsibility, Equality and Dignity). The B.R.E.A.D. organization is comprised of many congregations representing different traditions, all united by a shared commitment to pursuing justice in God's name. This commitment involves finding strength in our commonalities and harnessing the power of unity to address social issues. Beth Tikvah is proud to be a part of this movement, and our congregation typically has over 100 members attend the annual Nehemiah Action each spring. This event is a powerful demonstration of collective action and solidarity, where our members join others from diverse faith communities to advocate for meaningful change and justice in our society.





Congregations Beth Tikvah

List of Committees

BUILDING COMMITTEE
FINANCE COMMITTEE
FUNDRAISING COMMITTEE
MEMBERSHIP COMMITTEE
CARING COMMUNITY COMMITTEE
NEW MEMBER CONNECTIONS
COMMITTEE
RELIGIOUS SCHOOL COMMITTEE
RITUAL COMMITTEE
SOCIAL ACTION COMMITTEE
SECURITY COMMITTEE
YOUTH ENGAGEMENT COMMITTEE
ADULT EDUCATION COMMITTEE
SHISHIM
SISTERHOOD
BROTHERHOOD
LIFE & LEGACY
GARDEN BUDS

